

Additionen und Subtraktionen bis 1000



Name: _____

Eine Plusrechnung nennt man _____

Eine Minusrechnung nennt man _____

Das Ergebnis einer Plusrechnung nennt man _____

Das Ergebnis einer Minusrechnung nennt man _____



$402 - 370 = \underline{\quad}$

$361 + 546 = \underline{\quad}$

$787 + 111 = \underline{\quad}$

$287 + 571 = \underline{\quad}$

$180 - 170 = \underline{\quad}$

$885 - 860 = \underline{\quad}$

$251 - 230 = \underline{\quad}$

$255 + 675 = \underline{\quad}$

$263 + 367 = \underline{\quad}$

$741 + 114 = \underline{\quad}$

$723 - 500 = \underline{\quad}$

$855 - 840 = \underline{\quad}$

$838 + 159 = \underline{\quad}$

$466 - 266 = \underline{\quad}$

$282 + 362 = \underline{\quad}$

$809 - 165 = \underline{\quad}$

$603 + 278 = \underline{\quad}$

$821 - 442 = \underline{\quad}$

$846 - 304 = \underline{\quad}$

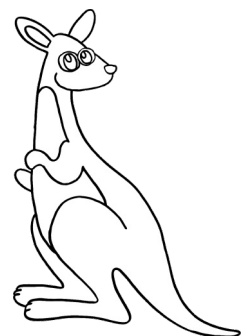
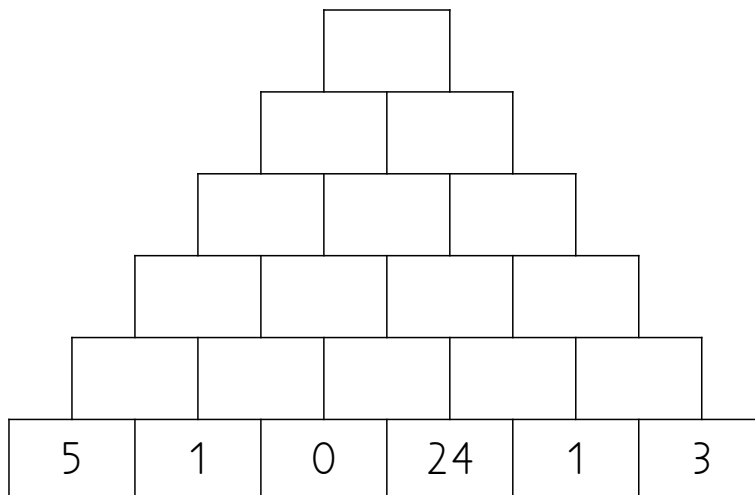
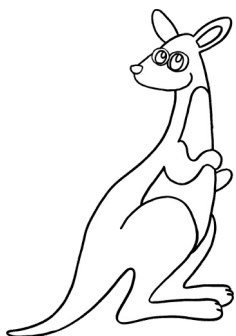
$186 + 704 = \underline{\quad}$

$433 - 367 = \underline{\quad}$

$126 + 589 = \underline{\quad}$

$681 - 507 = \underline{\quad}$

$508 + 228 = \underline{\quad}$



Additionen und Subtraktionen bis 1000



Name: _____

$736 - \underline{\quad} = 428$

$886 + 109 = \underline{\quad}$

$354 - \underline{\quad} = 107$

$616 + \underline{\quad} = 883$

$221 - \underline{\quad} = 112$

$868 + \underline{\quad} = 994$

$669 + 115 = \underline{\quad}$

$249 + 642 = \underline{\quad}$

$426 + \underline{\quad} = 893$

$558 - 249 = \underline{\quad}$

$886 - 427 = \underline{\quad}$

$556 - \underline{\quad} = 108$

$350 + \underline{\quad} = 615$

$131 + \underline{\quad} = 622$

$228 + \underline{\quad} = 518$

$268 - 177 = \underline{\quad}$

$475 - 285 = \underline{\quad}$

$422 - 231 = \underline{\quad}$

$\underline{\quad} - 372 = 181$

$437 + \underline{\quad} = 919$

$466 - \underline{\quad} = 296$

$534 + 186 = \underline{\quad}$

$760 - 680 = \underline{\quad}$

$\underline{\quad} + 254 = 816$

$\underline{\quad} + 177 = 855$

$\underline{\quad} + 284 = 737$

$\underline{\quad} - 164 = 49$

$553 - \underline{\quad} = 352$

$121 - 120 = \underline{\quad}$

$\underline{\quad} + 148 = 961$

$805 + \underline{\quad} = 935$

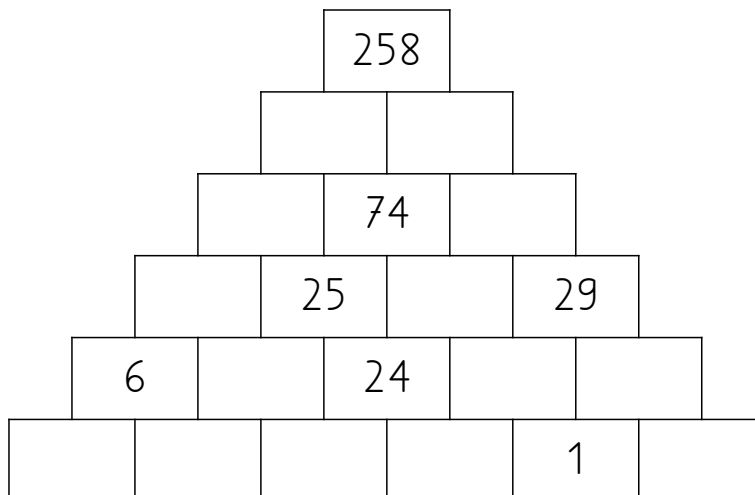
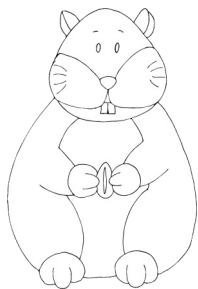
$277 - 146 = \underline{\quad}$

$617 - 356 = \underline{\quad}$

$744 - \underline{\quad} = 550$

$120 + 735 = \underline{\quad}$

$802 + 179 = \underline{\quad}$



Additionen und Subtraktionen bis 1100



Name: _____

$$\underline{\quad} - 189 = 676$$

$$174 + 559 = \underline{\quad}$$

$$\underline{\quad} - 266 = 489$$

$$334 + \underline{\quad} = 923$$

$$223 - 165 = \underline{\quad}$$

$$565 + \underline{\quad} = 853$$

$$559 + \underline{\quad} = 831$$

$$389 + 157 = \underline{\quad}$$

$$568 - \underline{\quad} = 389$$

$$582 - 394 = \underline{\quad}$$

$$\underline{\quad} - 184 = 289$$

$$287 + 286 = \underline{\quad}$$

$$125 + 696 = \underline{\quad}$$

$$630 - 290 = \underline{\quad}$$

$$\underline{\quad} - 260 = 180$$

$$580 - \underline{\quad} = 90$$

$$\underline{\quad} + 589 = 1028$$

$$563 + \underline{\quad} = 742$$

$$466 + \underline{\quad} = 941$$

$$333 + 488 = \underline{\quad}$$

$$824 + \underline{\quad} = 1022$$

$$330 - \underline{\quad} = 190$$

$$560 - \underline{\quad} = 380$$

$$\underline{\quad} - 360 = 60$$

$$\underline{\quad} + 908 = 1097$$

$$860 - \underline{\quad} = 320$$

$$\underline{\quad} + 307 = 431$$

$$280 - 110 = \underline{\quad}$$

$$246 + \underline{\quad} = 852$$

$$400 - \underline{\quad} = 160$$

$$379 + \underline{\quad} = 882$$

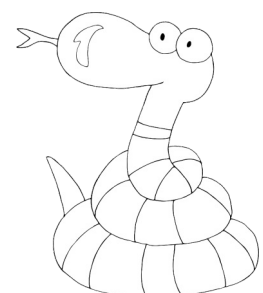
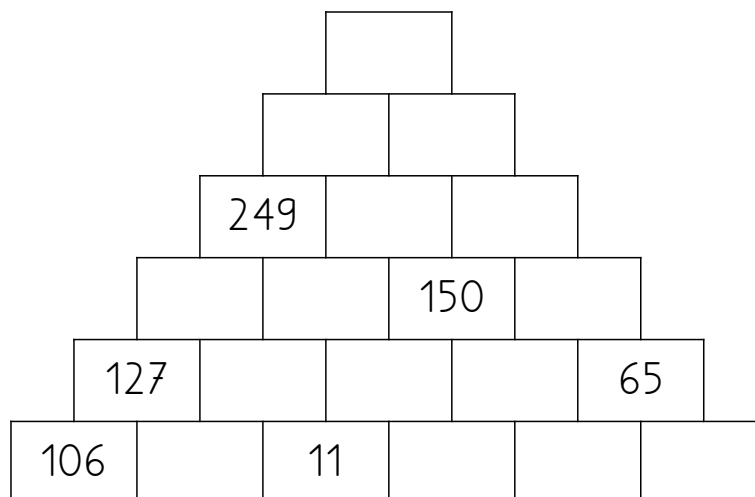
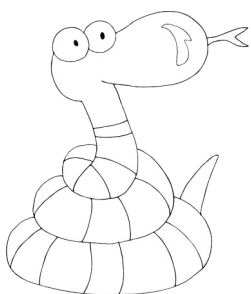
$$\underline{\quad} - 150 = 140$$

$$206 + \underline{\quad} = 613$$

$$400 - \underline{\quad} = 140$$

$$323 + \underline{\quad} = 931$$

$$870 - \underline{\quad} = 210$$



Additionen und Subtraktionen bis 1000



Name: _____

Eine Plusrechnung nennt man

Eine Minusrechnung nennt man

Das Ergebnis einer Plusrechnung nennt man

Das Ergebnis einer Minusrechnung nennt man

Addition

Subtraktion.

Summe.

Differenz.



$402 - 370 = \underline{32}$

$361 + 546 = \underline{907}$

$787 + 111 = \underline{898}$

$287 + 571 = \underline{858}$

$180 - 170 = \underline{10}$

$885 - 860 = \underline{25}$

$251 - 230 = \underline{21}$

$255 + 675 = \underline{930}$

$263 + 367 = \underline{630}$

$741 + 114 = \underline{855}$

$723 - 500 = \underline{223}$

$855 - 840 = \underline{15}$

$838 + 159 = \underline{997}$

$466 - 266 = \underline{200}$

$282 + 362 = \underline{644}$

$809 - 165 = \underline{644}$

$603 + 278 = \underline{881}$

$821 - 442 = \underline{379}$

$846 - 304 = \underline{542}$

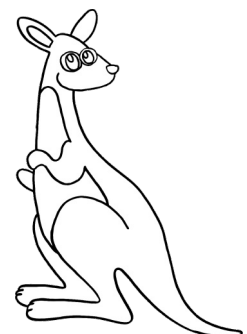
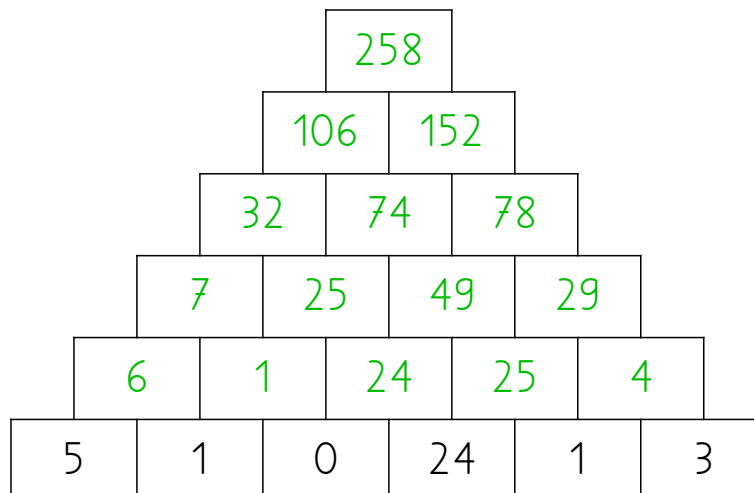
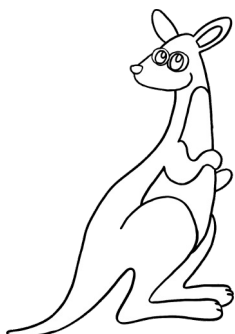
$186 + 704 = \underline{890}$

$433 - 367 = \underline{66}$

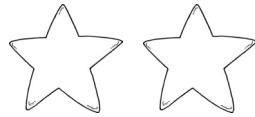
$126 + 589 = \underline{715}$

$681 - 507 = \underline{174}$

$508 + 228 = \underline{736}$



Additionen und Subtraktionen bis 1000



Name: _____

$736 - \underline{308} = 428$

$886 + 109 = \underline{995}$

$354 - \underline{247} = 107$

$616 + \underline{267} = 883$

$221 - \underline{109} = 112$

$868 + \underline{126} = 994$

$669 + 115 = \underline{784}$

$249 + 642 = \underline{891}$

$426 + \underline{467} = 893$

$558 - 249 = \underline{309}$

$886 - 427 = \underline{459}$

$556 - \underline{448} = 108$

$350 + \underline{265} = 615$

$131 + \underline{491} = 622$

$228 + \underline{290} = 518$

$268 - 177 = \underline{91}$

$475 - 285 = \underline{190}$

$422 - 231 = \underline{191}$

$\underline{553} - 372 = 181$

$437 + \underline{482} = 919$

$466 - \underline{170} = 296$

$534 + 186 = \underline{720}$

$760 - 680 = \underline{80}$

$\underline{562} + 254 = 816$

$\underline{678} + 177 = 855$

$\underline{453} + 284 = 737$

$\underline{213} - 164 = 49$

$553 - \underline{201} = 352$

$121 - 120 = \underline{1}$

$\underline{813} + 148 = 961$

$805 + \underline{130} = 935$

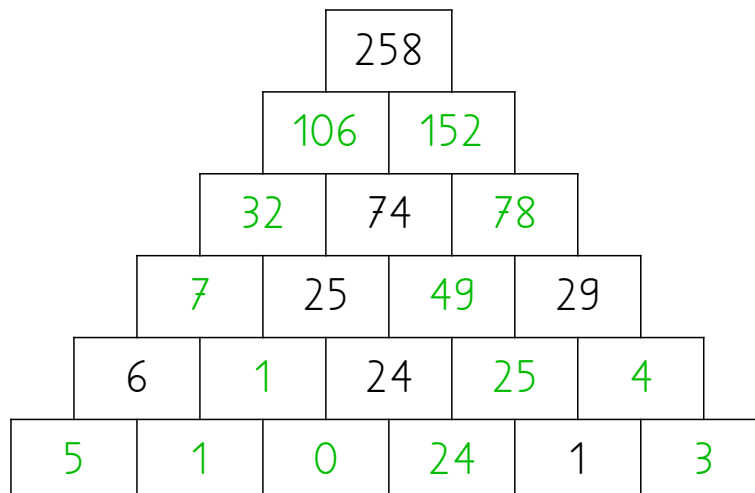
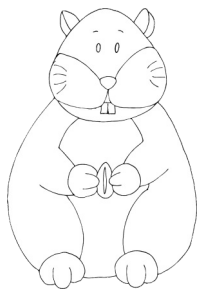
$277 - 146 = \underline{131}$

$617 - 356 = \underline{261}$

$744 - \underline{194} = 550$

$120 + 735 = \underline{855}$

$802 + 179 = \underline{981}$



Additionen und Subtraktionen bis 1100



Name: _____

$$\underline{865} - 189 = 676$$

$$174 + 559 = \underline{733}$$

$$\underline{755} - 266 = 489$$

$$334 + \underline{589} = 923$$

$$223 - 165 = \underline{58}$$

$$565 + \underline{288} = 853$$

$$559 + \underline{272} = 831$$

$$389 + 157 = \underline{546}$$

$$568 - \underline{179} = 389$$

$$582 - 394 = \underline{188}$$

$$\underline{473} - 184 = 289$$

$$287 + 286 = \underline{573}$$

$$125 + 696 = \underline{821}$$

$$630 - 290 = \underline{340}$$

$$\underline{440} - 260 = 180$$

$$580 - \underline{490} = 90$$

$$\underline{439} + 589 = 1028$$

$$563 + \underline{179} = 742$$

$$466 + \underline{475} = 941$$

$$333 + 488 = \underline{821}$$

$$824 + \underline{198} = 1022$$

$$330 - \underline{140} = 190$$

$$560 - \underline{180} = 380$$

$$\underline{420} - 360 = 60$$

$$\underline{189} + 908 = 1097$$

$$860 - \underline{540} = 320$$

$$\underline{124} + 307 = 431$$

$$280 - 110 = \underline{170}$$

$$246 + \underline{606} = 852$$

$$400 - \underline{240} = 160$$

$$379 + \underline{503} = 882$$

$$\underline{290} - 150 = 140$$

$$206 + \underline{407} = 613$$

$$400 - \underline{260} = 140$$

$$323 + \underline{608} = 931$$

$$870 - \underline{660} = 210$$

